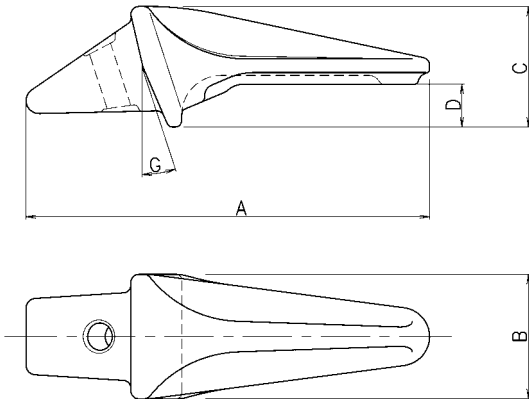


- Portapunta da saldare su benne retro, frontali e mini
- Weld-on adapters for loaders, backhoes and mini
- Anschweis-Halter für Ladeschaufeln-, Heck- und Minibagger
- Adapteur à souder pour pelles, retro et mini



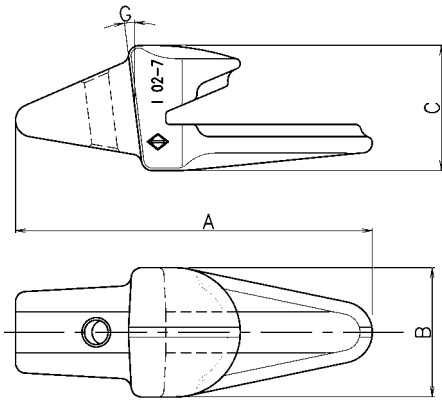
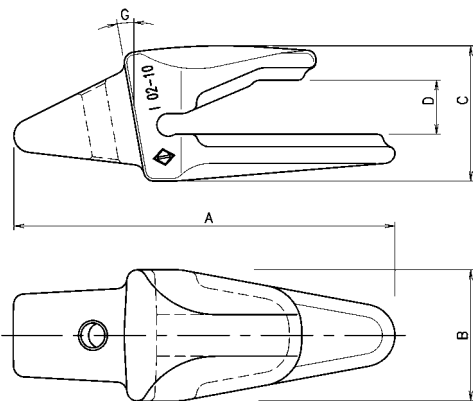
NS. RIF. OUR REF. U/REF. NOTRE REF.	PESO (KG) WEIGHT GEWICHT POIDS	DIMENSIONI - DIMENSIONS ABMESSUNGEN - DIMENSIONS					PUNTA TIP SPITZE POINTE	SPINA ELASTICA ELASTIC PIN SPANNSTIFT AXE ELASTIQUE	FORZA DI STRAPPO (KG) BREAK-OUT FORCE BRUCHFESTIGKEIT FORCE D'ARRACHEMENT	TONNELLAGGIO MACCHINA MACHINE TONNAGE MASCHINENGEWICHT POIDS MACHINE
		A	B	C	D	G				
* MB 1	0,6	140	37	41		15°	MB 4F	Ø 8 + Ø 5	3000	3 tons
MB 8	0,76	133	45.5	39.1	10.1	16°	MB 4F	Ø 8 + Ø 5	3000	3 tons
MI 2	1.1	170.5	54	50	17.5	18°	MS 02V	Ø 10 + Ø 6	4500	3/5 tons.
I 4	1.9	203.4	64	62	22	18°	IS 03V-IS 03F	Ø 12 + Ø 7 + Ø 4	7000	5/7 tons.
I 6F/1	3.5	265.4	75	77	27	13°34'				
I 6F/1 D	3.2	232	75	77	27	13°34'	I 5V	Ø 16 + Ø 10	9000	10/12 tons.
I 6F/1 S	3.2	232	75	77	27	13°34'				

* Saldato sotto la benna

Weld-on under the bucket

Tutti i numeri, simboli, e denominazioni originali sono usati soltanto per riferimento, e non si deve in alcun modo intendere che i pezzi elencati siano originali.
All manufacturers' name, numbers, symbols and descriptions are used for reference purpose only, and it is not implied that any part listed is the product of these manufacturers.

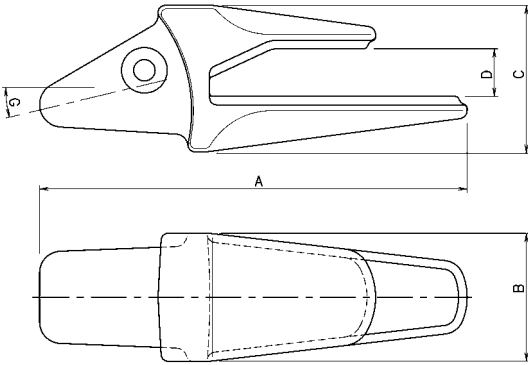
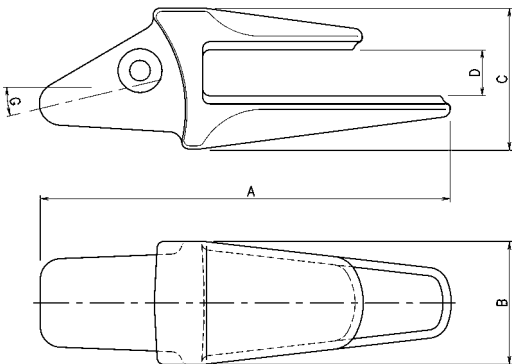
- Portapunta da saldare per escavatori e mini
- Weld-on adapters for excavators and mini
- Anschweis-Halter für Ladeschaufeln- und Minilöffel
- Adapteur à souder pour escavateurs et mini


1

2

NS. RIF. OUR REF. U.REF. NOTRE REF.	PARTIC. ITEM TYP DETAIL	PESO (KG) WEIGHT GEWICHT POIDS	DIMENSIONI - DIMENSIONS ABMESSUNGEN - DIMENSIONS					PUNTA TIP SPITZE POINTE	SPINA ELASTICA ELASTIC PIN SPANNSTIFT AXE ELASTIQUE	FORZA DI STRAPPO (KG) BREAK-OUT FORCE BRUCH-FESTIGKEIT FORCE D'ARRACHEMENT	TONNELLAGGIO MACCHINA MACHINE TONNAGE MASCHINENGEWICHT POIDS MACHINE
			A	B	C	D	G				
M 02	1	1.1	156.8	54	50	16	15°	MS 02V	Ø 10 + Ø 6	4500	3 tons
I 02-7	1	1.9	173	63	61	20	7°	IS 02-IS 03V	Ø 12 + Ø 7 + Ø 4	7000	5/7 tons.
I 02-10	2	1.9	182.5	63	65	26	10°	IS 02-IS 03V	Ø 12 + Ø 7 + Ø 4	7000	5/7 tons.
I 03	1	1.7	173	63	61	20	7°	IS 03V-16	Ø 14 + Ø 8	7000	5/7 tons.
I 6	2	3	228	75	77	26	13°34'	I 5V	Ø 16 + Ø 10	9000	10/12 tons.
I 11.1	2	6.6	298.5	90	90.8	26	12°30'	I 10	Ø 16 + Ø 10	11200	15/18 tons.

Tutti i numeri, simboli, e denominazioni originali sono usati soltanto per riferimento, e non si deve in alcun modo intendere che i pezzi elencati siano originali.
All manufacturers' name, numbers, symbols and descriptions are used for reference purpose only, and it is not implied that any part listed is the product of these manufacturers.

- Portapunta da saldare per escavatori
- Weld-on adapters for excavators
- Anschweiss-Halter für Baggerlöffel
- Adapteur à souder pour escavateurs


1

2

NS. RIF. OUR REF. U/REF. NOTRE REF.	PARTIC. ITEM TYP DETAIL	PESO (KG) WEIGHT GEWICHT POIDS	SPESSORE LAMA EDGE THICKNESS MESSERSTÄRKE ÉPAISSEUR DE LAME	DIMENSIONI - DIMENSIONS ABMESSUNGEN - DIMENSIONS					PUNTA TIP SPIZEN POINTE	PERNO PIN KEIL AXE	FORZA DI STRAPPO (KG) BREAK-OUT FORCE BRUCHFESTIGKEIT FORCE D'ARRACHEMENT	TONNELLAGGIO MACCHINA MACHINE TONNAGE MASCHINENGEWICHT POIDS MACHINE
				A	B	C	D	G				
IT 6	1	3	25	228	75	77	26	13°34'	IT 5 IT 5V	IT 7	9000	10/12 tons.
IT 11.1	1	6.6	25	298.5	90	90.8	26	12°30'	IT 10 IT 10V	IT 12	11200	15/18 tons.
IT 16.1	1	7.3	30-32	298.9	90	103	33.5	13°30'	IT 15	IT 17	15400	20/24 tons.
IT 16.2	2	7.3	30-32	289.9	90	103	33.5	13°30'	IT 15V			
IT 16.3	2	7.1	35	289.9	90	103	36	13°30'	IT 15RC			
IT 21.1	1	14.1	40	366.8	115	118	41.5	13°	IT 20	IT 22	22500	30/34 tons.
IT 21.2	2	14.1	40	366.8	115	118	41.5	13°	IT 20V			
IT 21.3	1	12.3	35	335.8	115	118	36.5	13°	IT 20RC			
IT 26.1	1	21.6	45	410.8	136	133	46.5	13°	IT 25	IT 27	29500	40 tons.
IT 26.2	2	20.5	45	410.8	136	133	46.5	13°	IT 25V			
IT 26.3	2	22	60	410.8	136	144	61	13°	IT 25RC			
IT 41.1	1	54.2	55	613.5	170	190	57	10°	IT 40	IT 42	50000	
IT 41.2	1	54.2	60	613.5	170	190	62	10°	IT 40V			
IT 41.3	1	54.2	75-80	613.5	170	201	82	10°	IT 40RC			

Tutti i numeri, simboli, e denominazioni originali sono usati soltanto per riferimento, e non si deve in alcun modo intendere che i pezzi elencati siano originali.
All manufacturers' name, numbers, symbols and descriptions are used for reference purpose only, and it is not implied that any part listed is the product of these manufacturers.