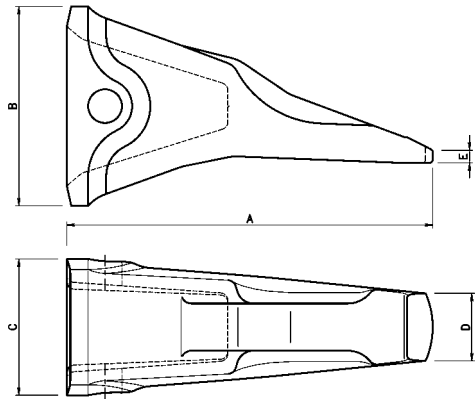
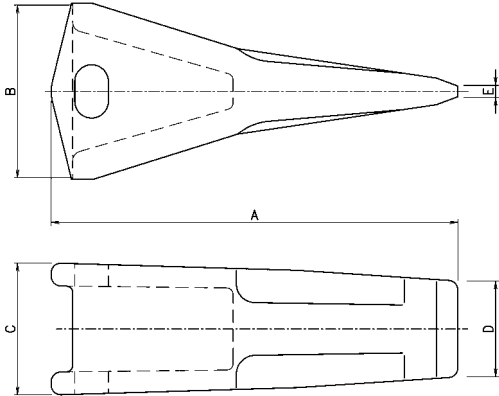


- Punta per ripper
- Ripper tips
- Ripper-Spitzen
- Pointes pour ripper



NS. RIF. OUR REF. U/REF. NOTRE REF.	N. ORIGINALE ORIGINAL. NO. ORIGINAL-NR. N. D'ORIGINE	PESO (KG) WEIGHT GEWICHT POIDS		PERNO PIN KEIL AXE	MODELLO MODEL MODELL MODELE
	<b>113-78-21140</b>	3.6		113-78-21170	D31-18
<b>KM 45</b>	<b>131-78-31190</b>	9.1		09244-02489	D66S-1
<b>KM 53</b>	<b>141-78-11253</b>	10.9	Std		
<b>KM 54</b>	<b>141-78-11254</b>	11.5	Long	09244-02508	D60,65-8 / D75S-5
<b>KM 55</b>	<b>141-78-11330</b>	9.4	Short		
<b>KM 64</b>	<b>175-78-31230</b>		Std		
<b>KM 65</b>	<b>175-78-31232</b>	13,7	Short-Sym		D85-21
<b>KM 66</b>	<b>175-78-31293</b>	15.2	Long-Sym.	09244-02508	D135A-2
<b>KM 67</b>	<b>175-78-34131</b>		Long-non Sym.		D155A-2
<b>KM 68</b>	<b>175-78-34141</b>		Long-non Sym.		
<b>KM 74</b>	<b>195-78-21331</b>	16.7	Std		
<b>KM 75</b>	<b>195-78-21333</b>		Short-Sym	09244-02508	D275A-2
<b>KM 76</b>	<b>195-78-29130</b>	20.5	Long-non Sym.		
<b>KM 77</b>	<b>195-78-29140</b>		Long-non Sym.		
<b>KM 84</b>	<b>195-78-71320</b>		Std		
<b>KM 85</b>	<b>195-78-71330</b>	26.5	Short-non Sym.	195-78-71360	D375A-2
<b>KM 86</b>	<b>195-78-71340</b>		Long-non Sym.		
<b>KM 87</b>	<b>195-78-71350</b>	28.2	Long-non Sym.		

Tutti i numeri, simboli, e denominazioni originali sono usati soltanto per riferimento, e non si deve in alcun modo intendere che i pezzi elencati siano originali.  
All manufacturers' name, numbers, symbols and descriptions are used for reference purpose only, and it is not implied that any part listed is the product of these manufacturers.